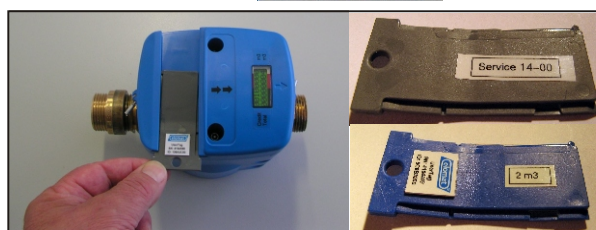


CASHFLOW

...from



PREPAYMENT WATER METERS



- Proven references
 - True digital counter mechanism, not derived from mechanical counter constructions
 - Easy implementation
 - Contact less RFID-Transponder technology using Tags, results in much less service and maintenance
 - Very, very accurate. Measuring over 100 pulses a litre resulting a resolution of 0,01 litre and accuracy of 0,05 litre
 - Easy to operate also for untrained and unskilled people
 - Build in fraud detection of strong external applied electromagnetic fields, opening the meter, and optional bypass
 - Attempt of fraud is recorded onto the Tag and will be detected at the office.
 - Battery powered. Lifespan battery five years at least. Where an external power supply is used, the battery operates as a backup battery. Another option is to make use of our dro-generator; Individual tariffs, block tariffs and free water possibilities are implemented
 - A powerful PC-based system creates effective water and cashflow management tools for a Water Board or Municipality
 - Return on Investment in a relative short period of time.
 - High volume production results in low cost prices of the meter and spare parts
 - Type of the meter can be a QN 1,5 with a nominal flow of 1500 litres per hour and a maximum of 3000 litres per hour. Dependent on the water pressure in the infrastructure, mostly the QN 1,5 will be efficient.
- The electronics are state of the art and RoHS compliant (lead free). Potting the electronics is a standard procedure to protect them against humid and tropical environments. A build-in RISC-microprocessor measures and controls several sensors. Also tamper and fraud detection can be installed. To get the meter out of the Tamper mode, special Service tags are needed.
 - The Meter does not have keys or buttons. To interact with the meter we use contact less wireless RFID-Transponder Tags. The meter itself also writes data back onto the Tag like meter readings and status of the meter. These results can be read into our Management Software for further analyses and statistics. The tags used by the customer are called User Tags, which can be disposable or rechargeable. For service and maintenance of the meter you can use special Service Tags

Elomat Wassertechnik GmbH

Mättich - Elomatstr. 10 D-77880 Sasbach Tel.: 07841/2077-0 Fax: 07841/2077-22

e-mail: wittenauer@elomat.de • www.elomat.de

