



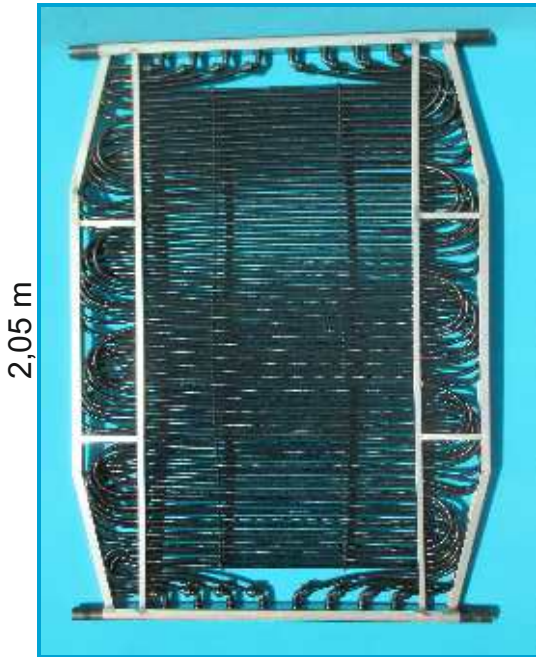
## Solar/Air Absorber

...von



...wir erfinden`s einfach

- ☛ Heats pool water in a short time
- ☛ Pre-installed modular design, quick assembly on site
- ☛ Flexible set-up, attractive design with stainless steel frame
- ☛ Designed for pools from 5 m<sup>3</sup>



1,45 m

- ☛ Modified UV and frost-resistant black flexible corrugated pipe from PP
- ☛ 4-fold absorber surface based on the geometry of the corrugated pipe. Increases performance, in particular for air absorption
- ☛ Alternative with simpler, but more effective Plastic glass cover (long-term UV-resistant) for increased performance
- ☛ Rubber-free, does not attract martens
- ☛ Light, robust stainless steel frame
- ☛ Streamlined pipe layout for flow, venting and draining
- ☛ Only a few connecting parts
- ☛ No sensitive glued connections
- ☛ Low weight and compact design for easy assembly and transport

**-Various set-up options, e.g. standing next to the pool in the garden  
-70° bending between modules possible**

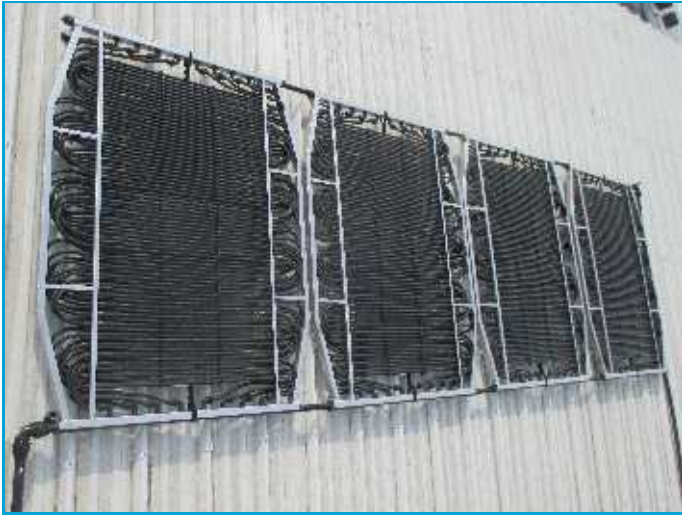


Dual function as a privacy protection screen possible



Integrates well into the overall design of the pool and its surroundings

**Installation on roof and wall surfaces also possible**



For example, on flat or pitched roofs. The distributor pipe must always be positioned at the bottom to permit drainage. In other words, the module may not be rotated through 90°



For example, wall-mounted, can be easily fitted onto the special wall brackets (see accessories)

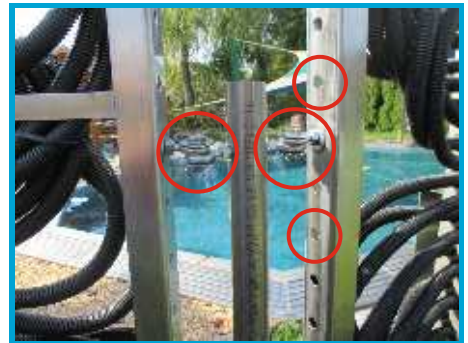
**A few useful details**



4 adjustable feet to adjust inclination on even flat roofs or similar to enable the absorber to be drained (see accessories)



Simple insertion of 3 counterweight plates into the box located at the back as wind / storm protection. Simply fit the robust and weatherproof arrester cable to the frame



Variable height adjustment up to 10 cm (2 x 5 cm) possible



Clear supply connections with all set-up types



Ditto for return flows running parallel behind the supports. The venting and ventilation connector is always situated at the highest point as it is rotatable



The connection for pipe venting and ventilation is integrated into the connection part of the return flow. No additional fittings required

## Cleverly designed



The flexible connecting pipes permit height differences to suit differences in the level of the terrain



The flexible connecting pipes are made of UV- and frost-resistant plastic. They are fitted to the distribution/collection pipes with the supplied stainless steel clamps, providing a waterproof connection, and secured by screws to prevent pull-out



Practical drainage option using a ball valve

## Montagehilfe



A manual soil drill with a diameter of 120 mm is sufficient for excavating the foundation of the pipe posts when erecting a fence. The drilled hole must have a depth of 80 cm and is filled with concrete. The drill may either be hired free of charge or purchased (alternative: excavation by hand 40x40x80 cm)



Alternative: effortless machine drilling. The device, including the drill, can be hired

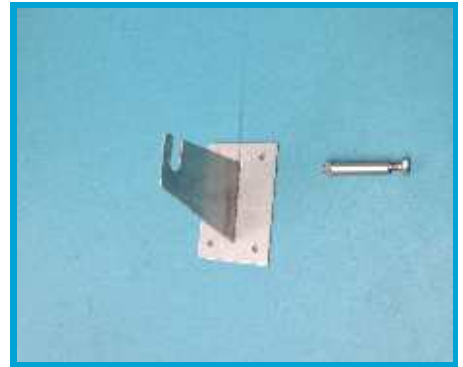
## Accessories



For roof, wall or vertical set-up:  
1 set supply and return connections  
as well as a venting/ air vent and  
draining valve.  
Order No. MAXI02



For roof, wall or vertical set-up:  
1 set connecting pipes for  
distribution/collection pipes including  
2 stainless steel clamps (not shown)  
Order No. MAXI03



For wall assembly: stainless steel  
console including suspension screw.  
4 are needed for the first module,  
2 each for each additional module.  
Order No. MAXI04



4 adjustable feet for  
Flat roof installation  
o. f. Roofs up to 5 °



For fixing on the ground:  
stainless steel supports  
including stainless  
steel earth anchor to be set  
in concrete. Length of supports  
149 cm, length of earth  
anchor 80 cm.  
There are 2 set screws in the  
upper section of the earth  
anchor to enable the height of  
the supports or the modules to  
be adjusted telescopically  
(additional option for  
adjusting to the ground level).  
2 screws are required for the  
first module and one each  
for all others.  
Order No. MAXIA06



Ditto, however,  
a stainless steel  
foundation slab  
is used for  
fastening instead  
of the earth  
anchor, for  
instance to  
concrete  
surfaces  
OR similar. Same  
number required  
as for design A  
with earth  
anchors.  
Order No.  
MAXIB07



Earth drill dia.  
120 mm Ø for  
production of concrete  
foundations. Can be  
hired free of charge  
or purchase possible.  
Order No. MAXI08



Ditto with battery drive  
unit, can be hired or  
purchase possible.  
Order No. MAXI09

### Technical data

- Ratio of collector surface to absorber surface 1:4
- Power without plastic glass cover per module up to 2 kW
- With plastic glass cover up to 3 kW
- External dimensions of module W: 1.49 m; H/L: 2.05 m
- Weight of empty module: approx. 25 kg / approx. 50 kg with ballast
- Weight of filled module: approx. 52 kg / approx. 77 kg with ballast
- Dimensions of corrugated pipes of absorber OD: 18 mm
- Connection dimensions distribution/collection pipes OD: 40 mm
- Recommended throughput per module: 700 ltr/h
- Pressure loss per module: 60 mbar / 700 ltr/h
- Operating pressure: 1 bar
- Test pressure: 1,5 bar
- Resistant to vacuum
- Dimensional stability in emptied condition: - 30° + 70°C (No access during sub-zero temperatures)
- Maximum medium temperature: 70 °C
- Materials: PE / PP / EPDM toxicologically safe
- Frame structure: stainless steel
- Resistance: pool water, seawater, glycol or similar

### Dealer address

### size selection

1. Maxisorber module without plastic glass cover is sufficient for up to 7 m<sup>3</sup> pool water warming in the summer
2. Dto, however, with plastic glass cover up to 8 m<sup>3</sup>